

Assigning an IP-configuration to your amplifier or finding “lost amplifiers” in your network

A common problem in any LAN is how to connect to a device, whose network configuration is set to “DHCP”.

When accidentally a devices’ network configuration is set to DHCP, it can be hard to find out what IP address that device actually uses (especially when there is no DHCP server at all in your LAN).

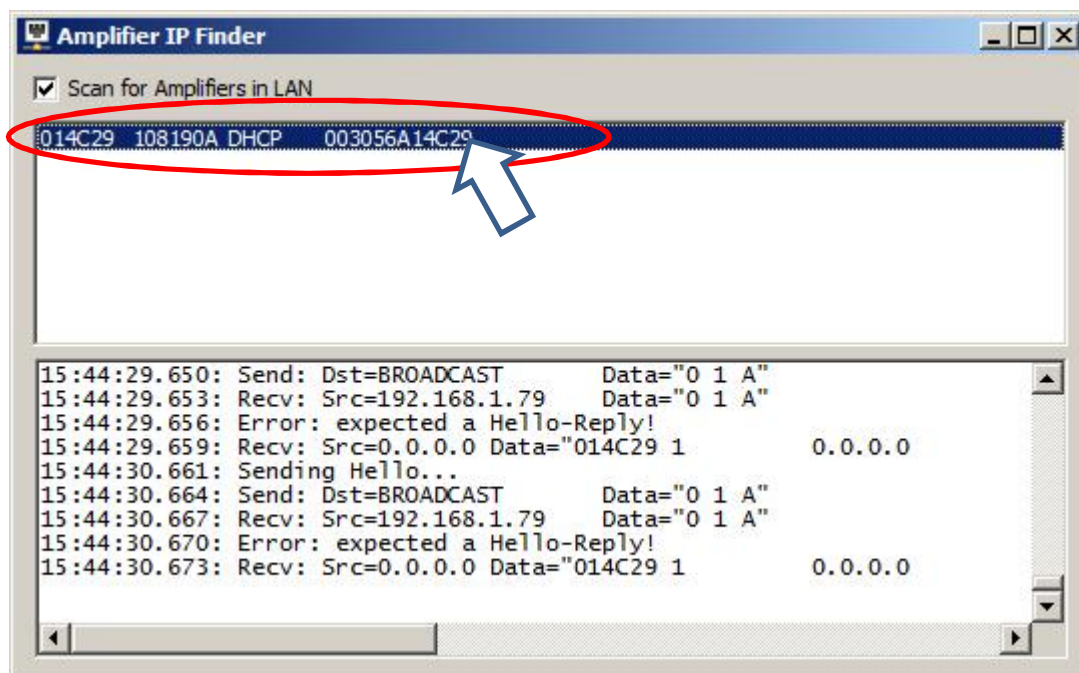
If this happens to your BONN amplifier, or you just want to change the IP settings without using a browser, you can use our utility BONN Amplifier Finder:

Turn on the amplifier

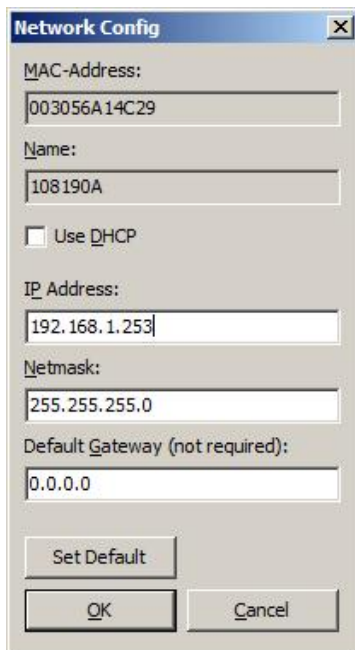
Start the AmpFinder.exe program on a Computer in the amplifier’s LAN.

Confirm the windows firewall dialogue (it appears because AmpFinder uses UDP-broadcasts to find your amplifier in the LAN)

Wait until you will see a line in the upper list box of the main window and select by double-click

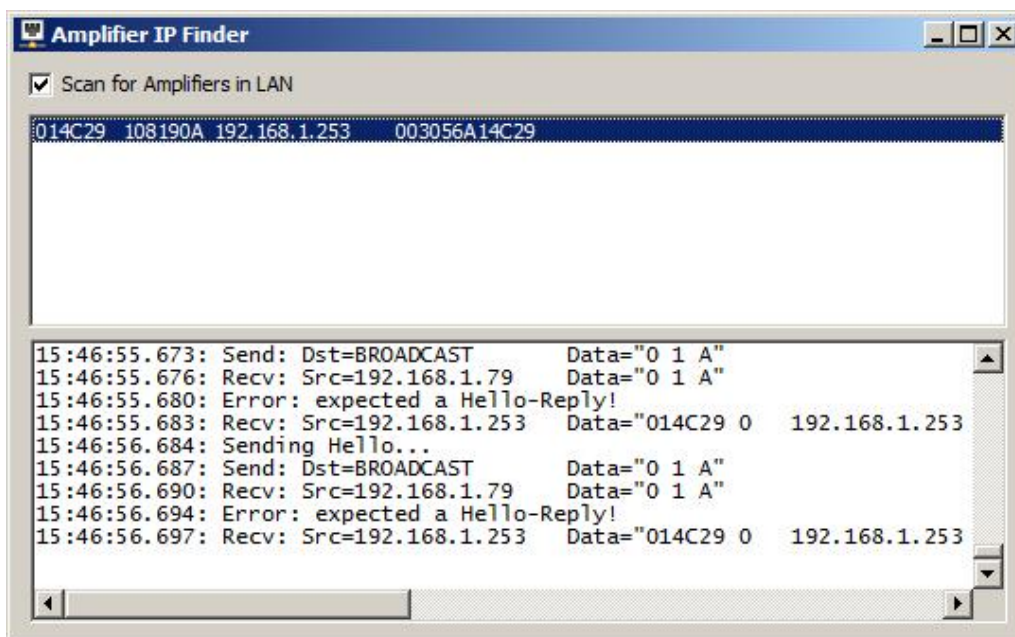


A “network config” window appears.



Select the desired amplifier network configuration and confirm OK.

Wait a few seconds until the amplifier applied the new settings:



Check that the network settings are correct.