



TETRA OPTICAL MASTER REPEATER

- UPTO 8 OPTICAL OUTPUTs
• STAR or DAISY CHAIN CONFIGURATION
• REMOTE SUPERVISION OF ALL SLAVE UNITS
• WDM TECHNOLOGY (Optical Wavelength Division Multiplexer)
• AUTOMATIC OPTICAL POWER CONTROL
• SUPPORTS BOTH MEDIUM & MACRO SLAVES
• SNMP SUPPORT

This TETRA master repeater is intended for use to convert signals from RF to optical and supply the remote optical slave repeaters. Typical applications are: long tunnel sections, in-building systems, large area outdoor coverage and long distance feed areas where the cost of the traditional RF cable is more expensive than the economical optical fiber solutions.

The standard 19" cabinet has upto 8 optical converters each with FC/APC optical female connectors. All 8 uplink and downlink gain can be set individually.

Using WDM (Wavelength Division Multiplex) technology the uplink and downlink signals are going on he same optical cable. The same optical cable is used for the remote supervision and alarm handling functions, which results a reliable control of communication link. All the slaves (including theirs optional external alarms) and the master unit can controlled through the master unit with a direct connection or by the help of one GSM modem.

For typical arrangement please, see drawings on page 2.

Electrical characteristics:

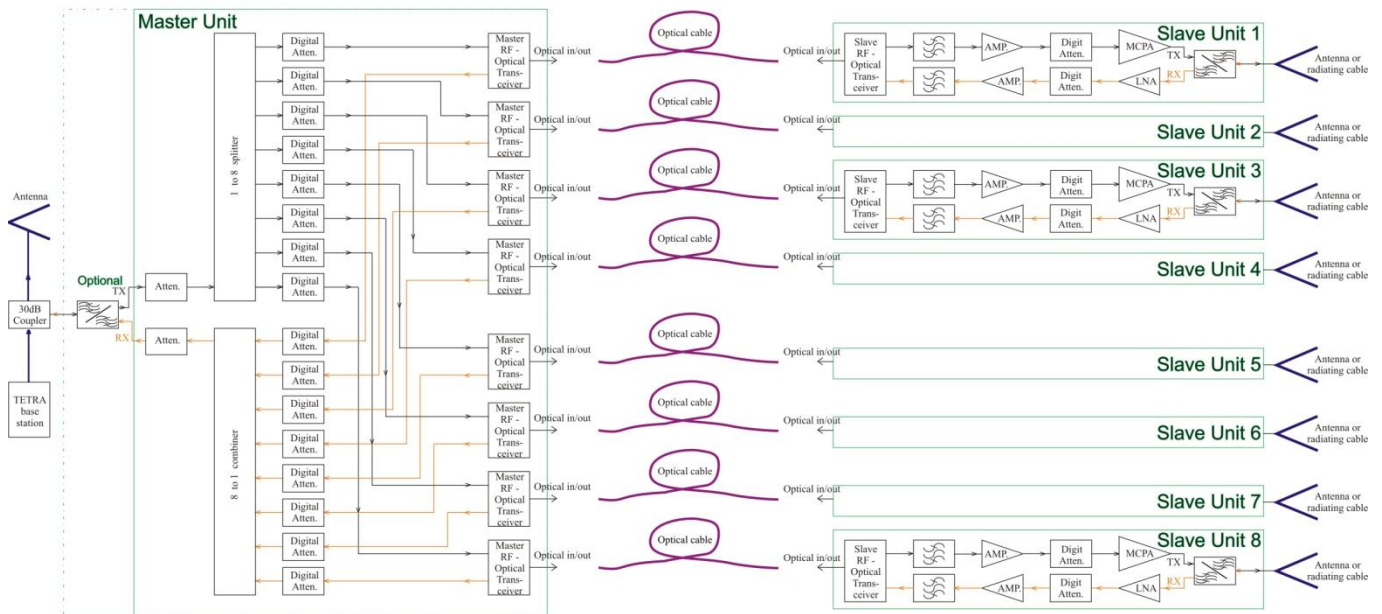
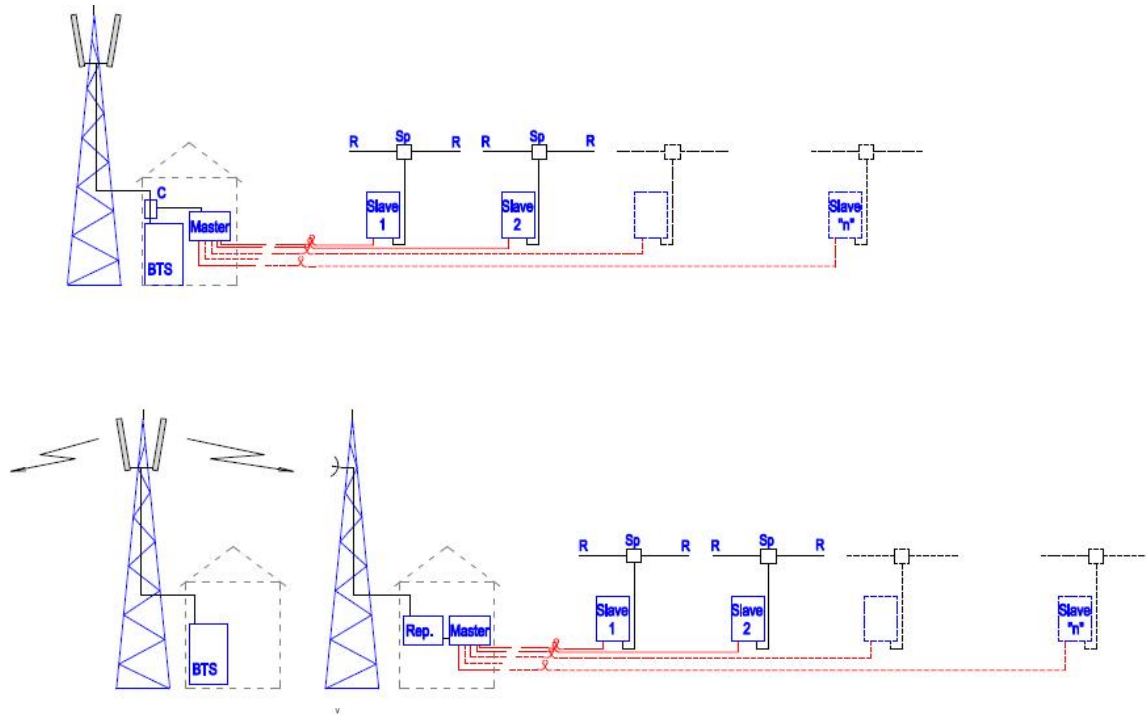
Table with 2 columns: Parameters and Base Station Site Master REPEATER. Rows include Frequency Band Uplink, Frequency Band Downlink, Nominal Gain, Gain Setting, Pass Band Ripple, Gain Stability, Optical Module Maximum RF Input Power, Optical loss between master and slave, Optical Connectors, RF Connectors, Power Supply, Power Consumption, Weight, Size, Operating Temperature Range, Storage Temperature Range, Control Options, Alarm out, Degree of Protection.

(\* ) Other TETRA or VHF bands are also possible.
(\*\*) Depends on number of master optical transceivers inside.
(\*\*\*) 1U height free space below and above and no cover (another option: + fun and holes)
Specifications are subject to change without notice.



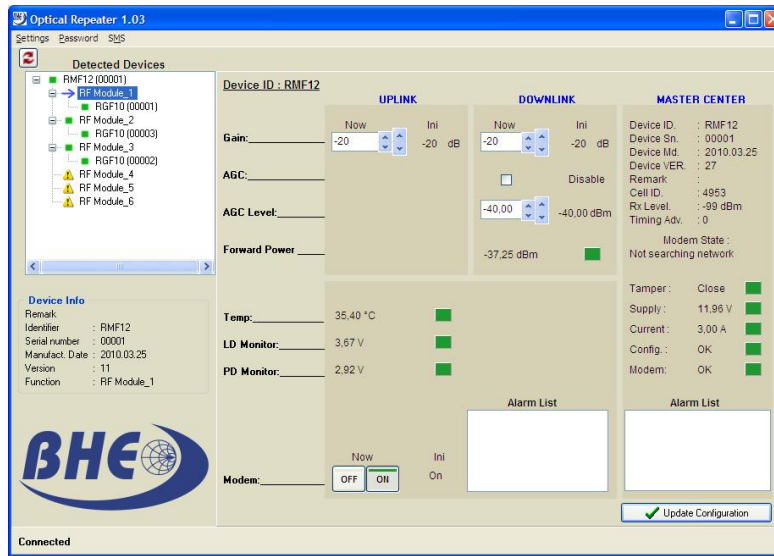
**TETRA OPTICAL MASTER REPEATER**

**Block diagram of BHE optical systems:**

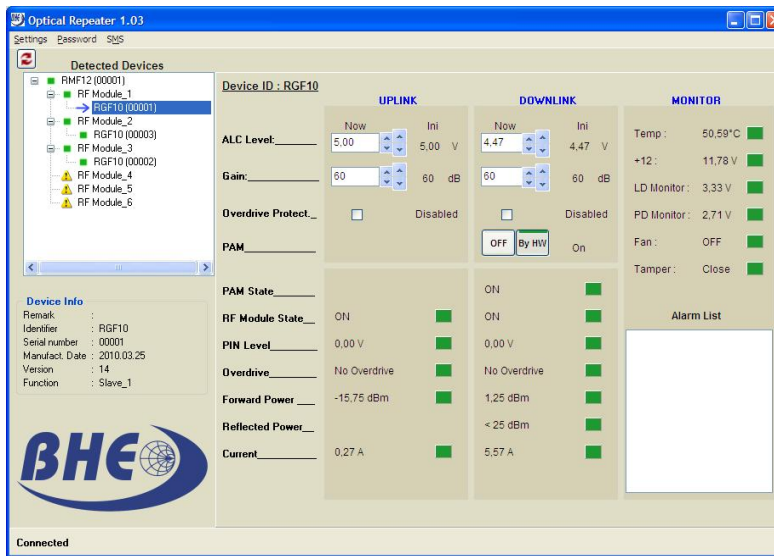




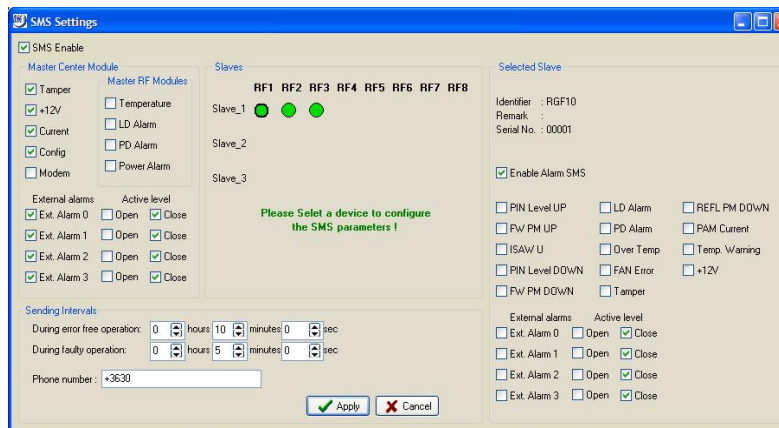
# TETRA OPTICAL MASTER REPEATER



Master unit control window



Slave unit control window



Alarm (SMS) control window





**BRMF20**

**TETRA OPTICAL  
MASTER REPEATER**



Picture of base station side **BRMF20 Master repeater** with 6 (max 8) optical outputs

