

## Assigning a IP-configuration to your amplifier / finding „lost Amplifiers“ in your network

A common problem in a LAN is, how to connect to a device, whose network configuration is set to “DHCP”.

When you accidentally set a devices’ network configuration to DHCP, it can be hard to find out what IP address that device actually uses (especially when there is no DHCP server at all in your LAN).

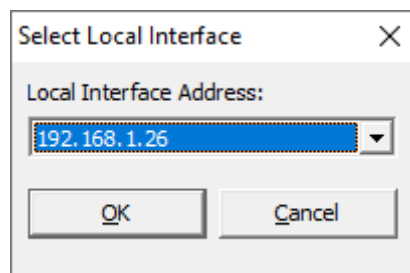
If this happens to your BONN amplifier, or you just want to change the IP settings without using a browser, you can use the BONN Amplifier Finder:

Power on the amplifier

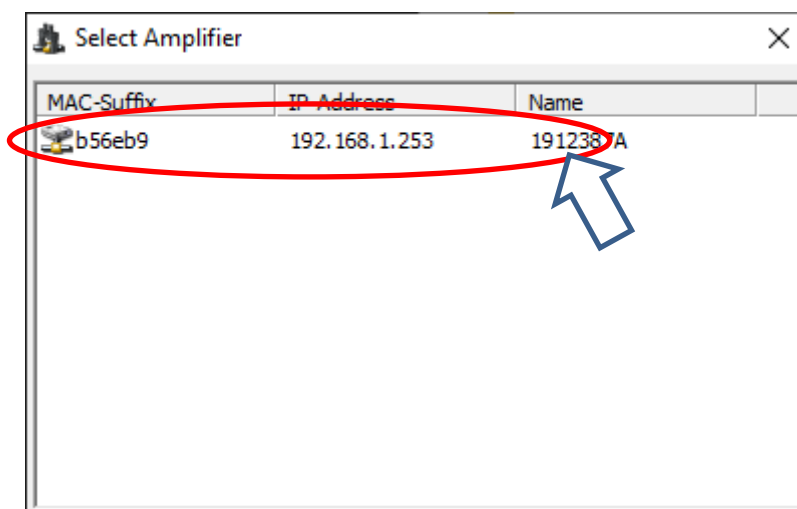
Start the AmpFinder.exe program on a Computer in the amplifier’s LAN.

Confirm the windows firewall dialogue (it appears because AmpFinder uses UDP-broadcasts to find your amplifier in the LAN).

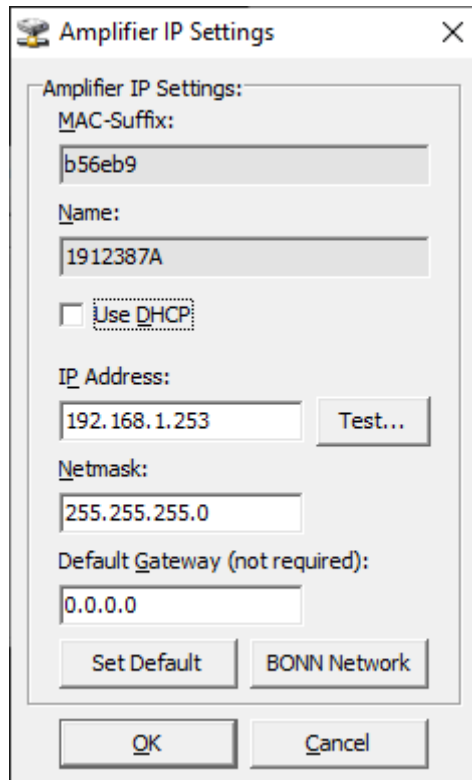
Select your local interface address, and confirm with OK.



Wait until you see all amplifier in the Network at the main window. Choose your amplifier and double-click it.



An “Amplifier IP Settings” window appears. Type in the desired network configuration of the amplifier and click OK.



Amplifier IP Settings

Amplifier IP Settings:

MAC-Suffix:  
b56eb9

Name:  
1912387A

☐ Use DHCP

IP Address:  
192.168.1.253 Test...

Netmask:  
255.255.255.0

Default Gateway (not required):  
0.0.0.0

Set Default BONN Network

OK Cancel

Wait a few seconds until the amplifier applied the new settings.

The “Test...” button can be used to send a test command to the amplifier.