

BONN Amplifier Automation Integration via GPIB

When an amplifier shall be connected to the PC via GPIB, usually a GPIB-USB-Adapter like National Instruments' [NI GPIB-USB-HS](#) or Agilent's [82357A](#) or [82357B](#) will be used.

Please note: we cannot support the installation of your GPIB adapter.
Please refer to the manufacturer's documentation.

Here we are assuming that the GPIB adapter is already up and running.

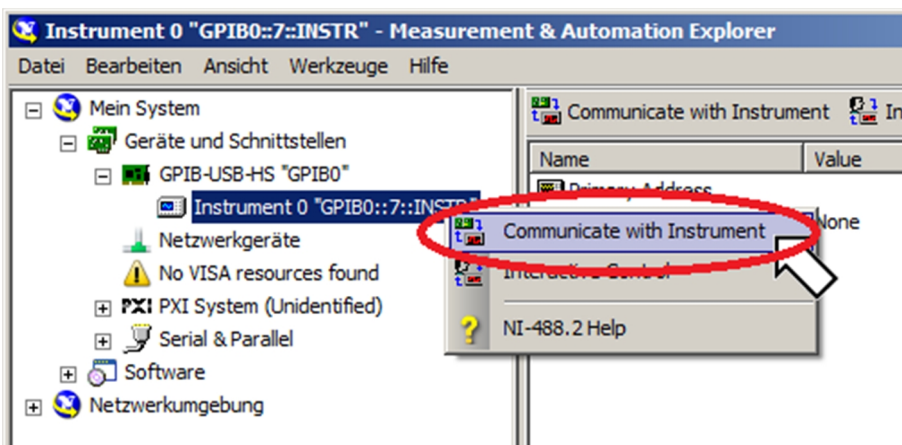
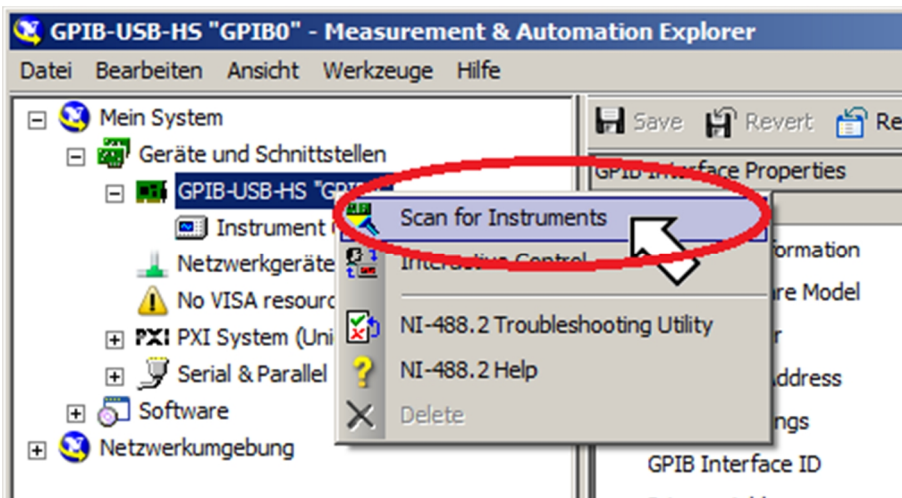
Integration into Automation Software

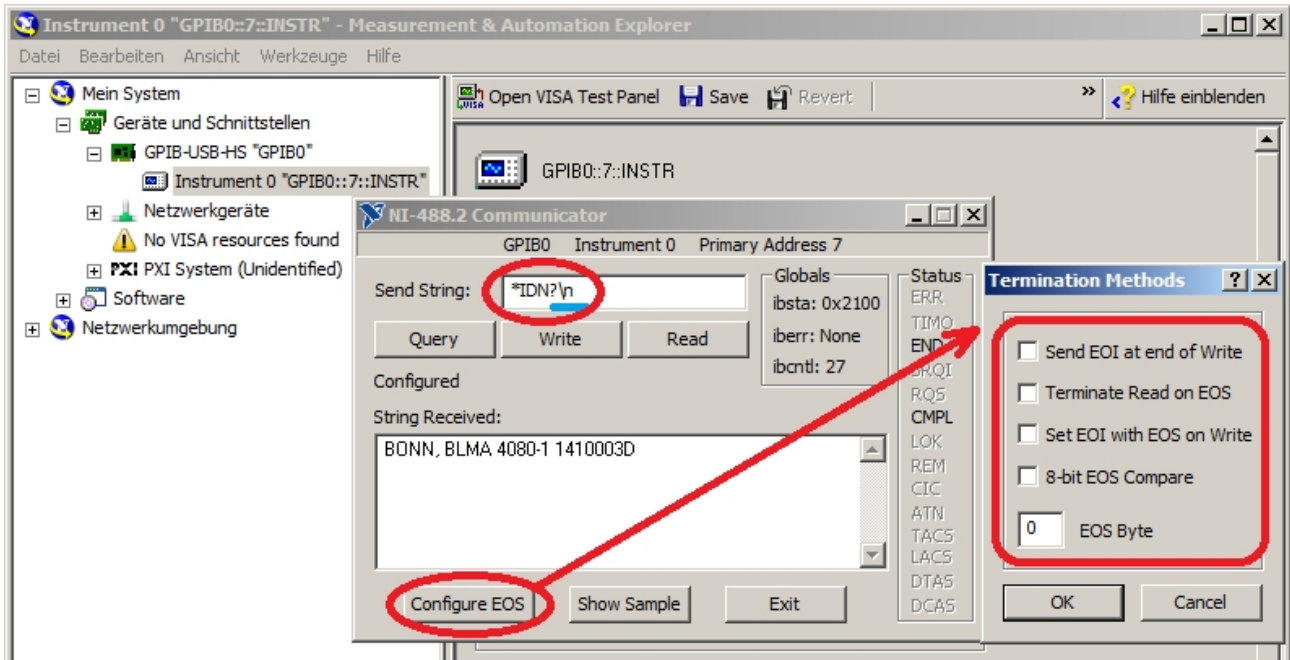
Here are some screenshots, helping to establish a GPIB connection to an amplifier for popular automation software:

National Instrument Measurement & Automation Explorer

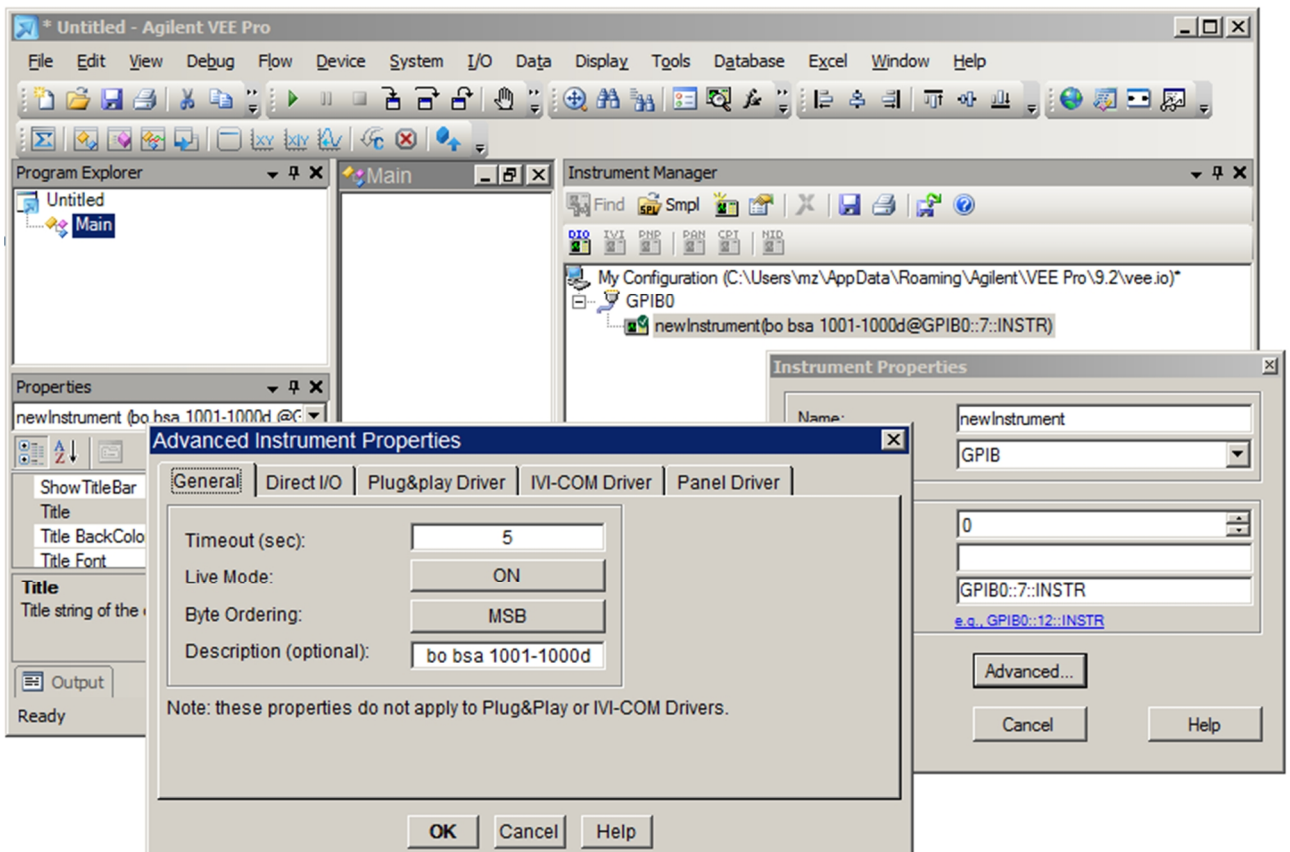
When scanning for an amplifier the screenshots shown at next pages should be seen.

Please note: when testing connection to the instrument, you must not forget to explicitly append a newline character `\n` at the send string textbox (see red circle)





Agilent Vee



Rohde & Schwarz EMC32

