

BONN Amplifier Automation Integration via Ethernet (LAN)

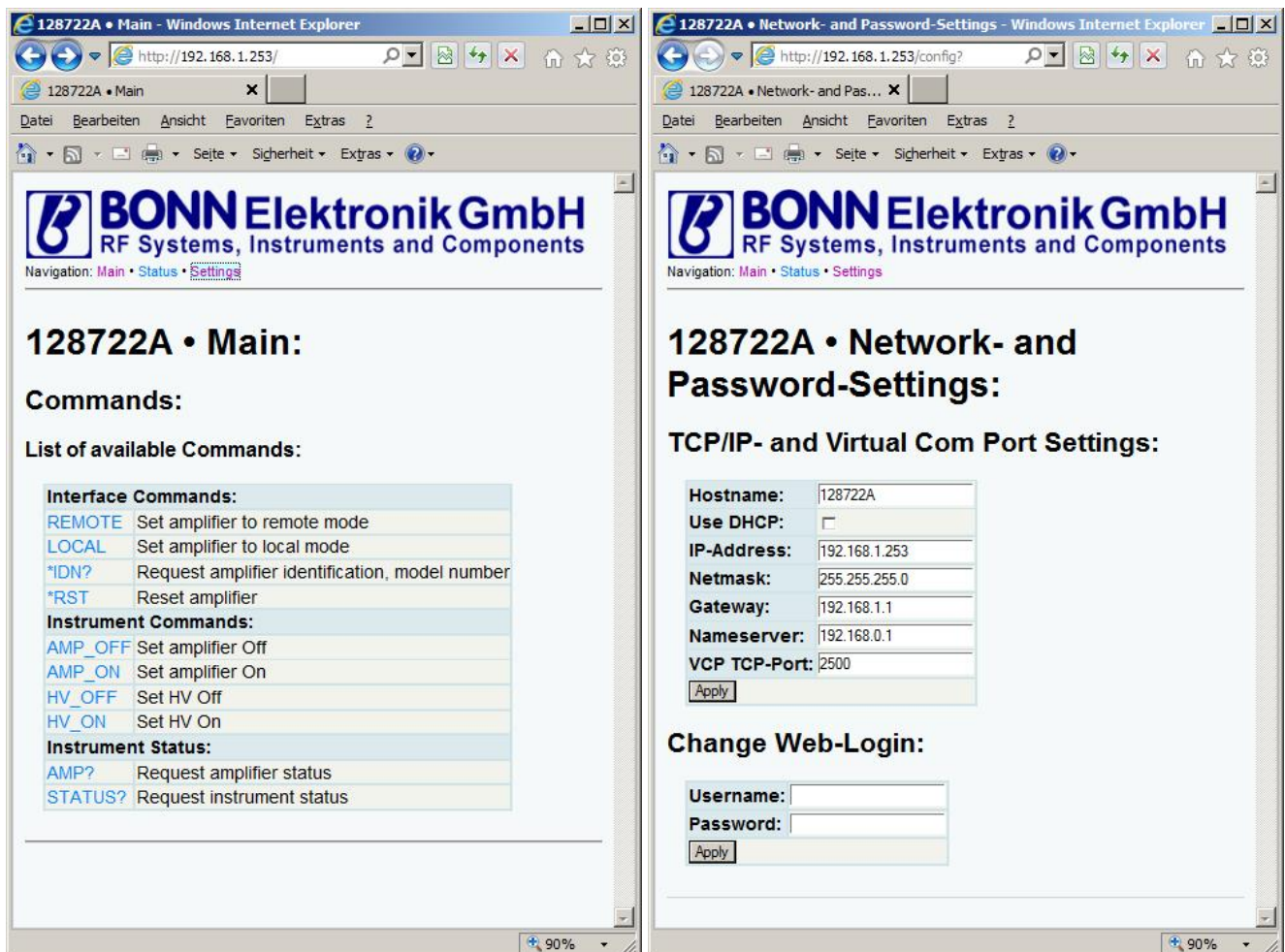
Connection Test

The LAN Interface does not require any drivers. Connection to the amplifier is established either via web interface or a dedicated command line interface, located by default at TCP Port 2500.

Web Interface

The web interface's default address is <http://192.168.1.253>.

The resulting website should look similar to following screenshots:



Please note: finding “lost amplifiers” in your network

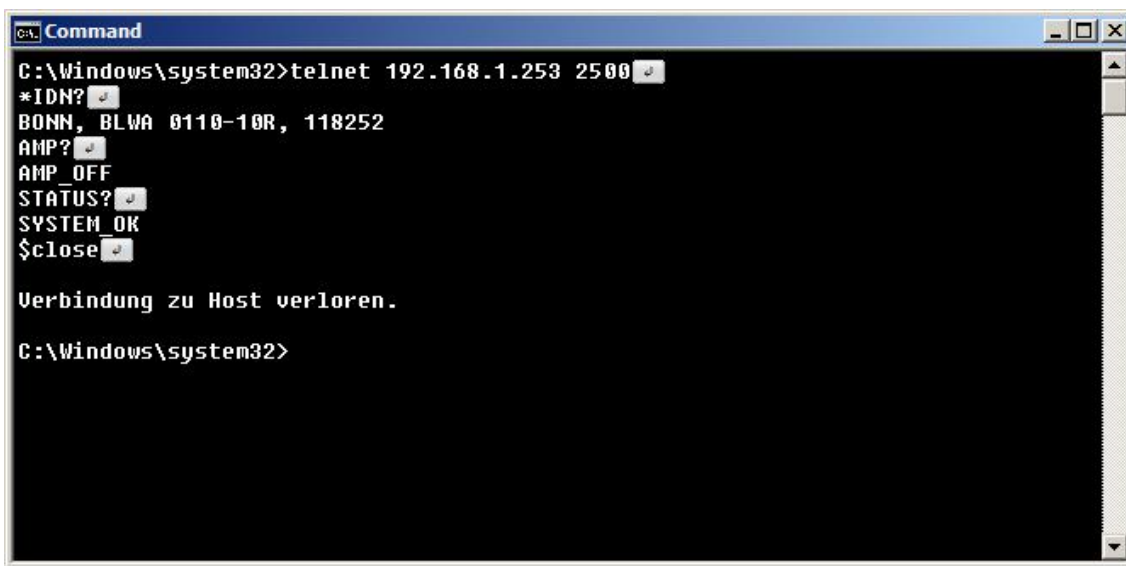
If your BONN amplifier cannot be found in your network, or you just want to change the IP settings without using a browser, you can use our utility BONN Amplifier Finder.

TCP Command Line Interface

TCP command line interface is located at TCP-Port 2500 by default. It is the typical interface used for automation.

Any automation measurement software will connect to this port, send commands to and receive replies from an amplifier the same way, as if connected via GPIB.

The connection to an amplifier can be tested by using the standard windows telnet command line program. Common GPIB commands can be used:



```
C:\Windows\system32>telnet 192.168.1.253 2500
*IDN?
BONN, BLWA 0110-10R, 118252
AMP?
AMP OFF
STATUS?
SYSTEM OK
$close

Verbindung zu Host verloren.

C:\Windows\system32>
```

If the session looks similar to this screenshot, then the connection between PC and amplifier is up and running.

Integration into Automation Software

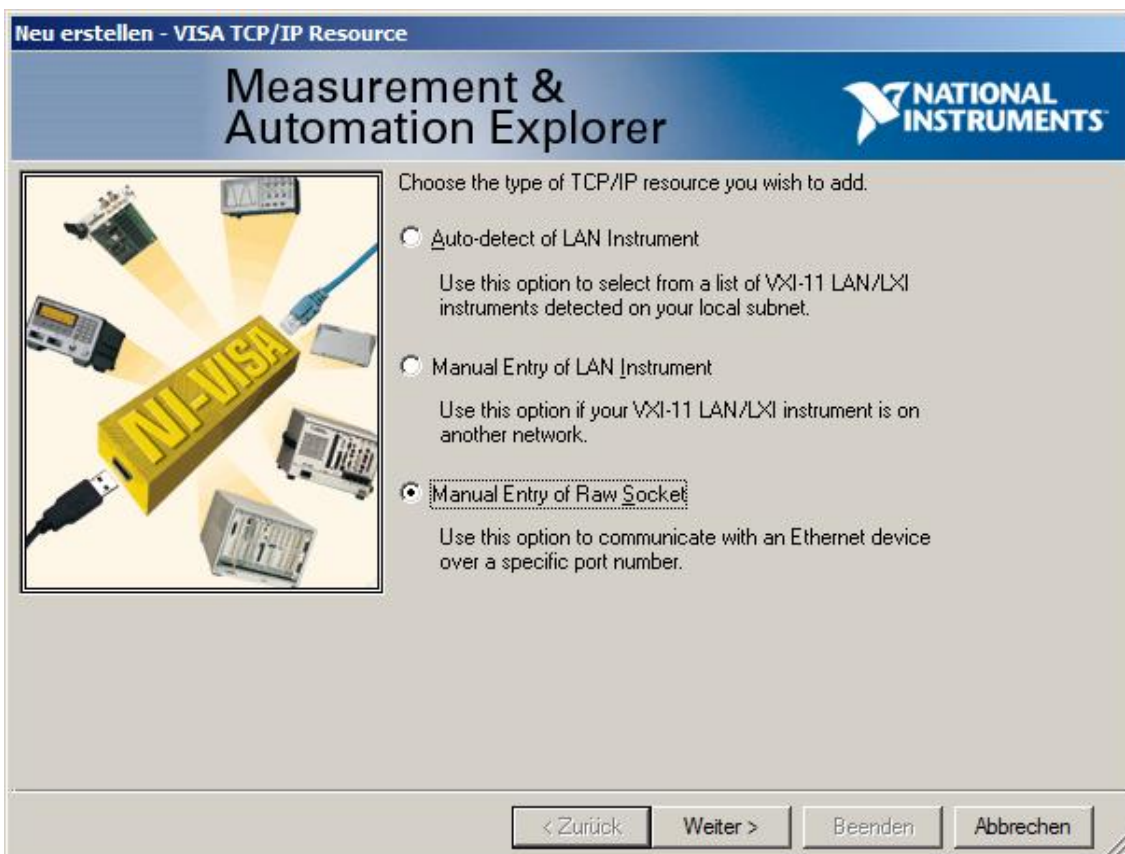
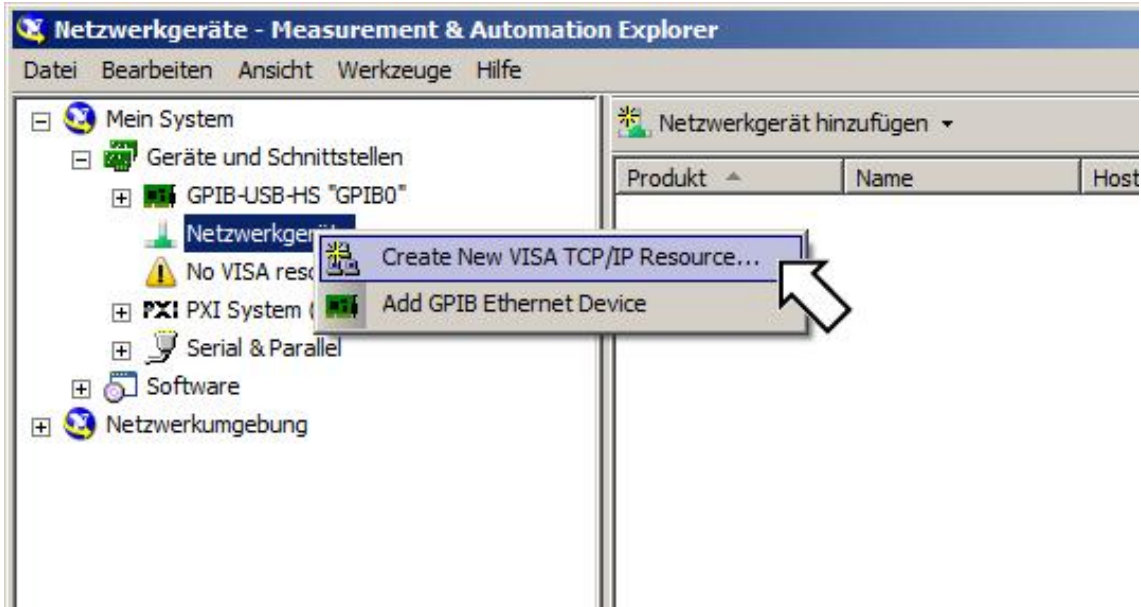
Here are some screenshots, helping to establish a TCP connection to an amplifier for popular automation software:

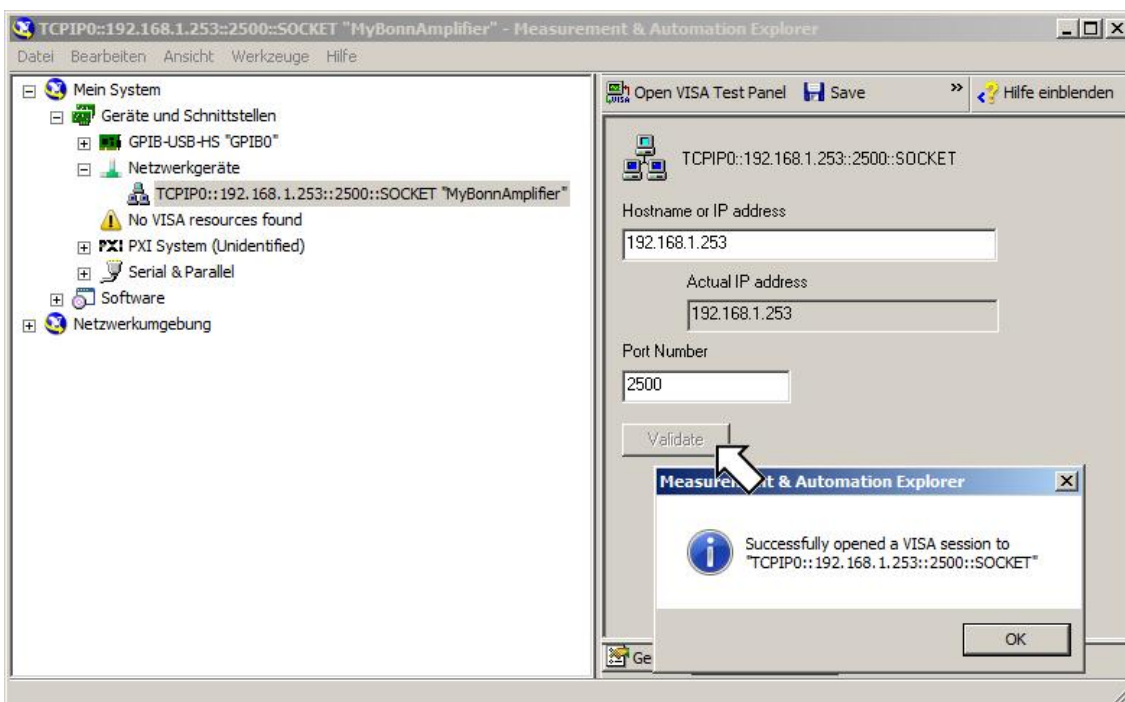
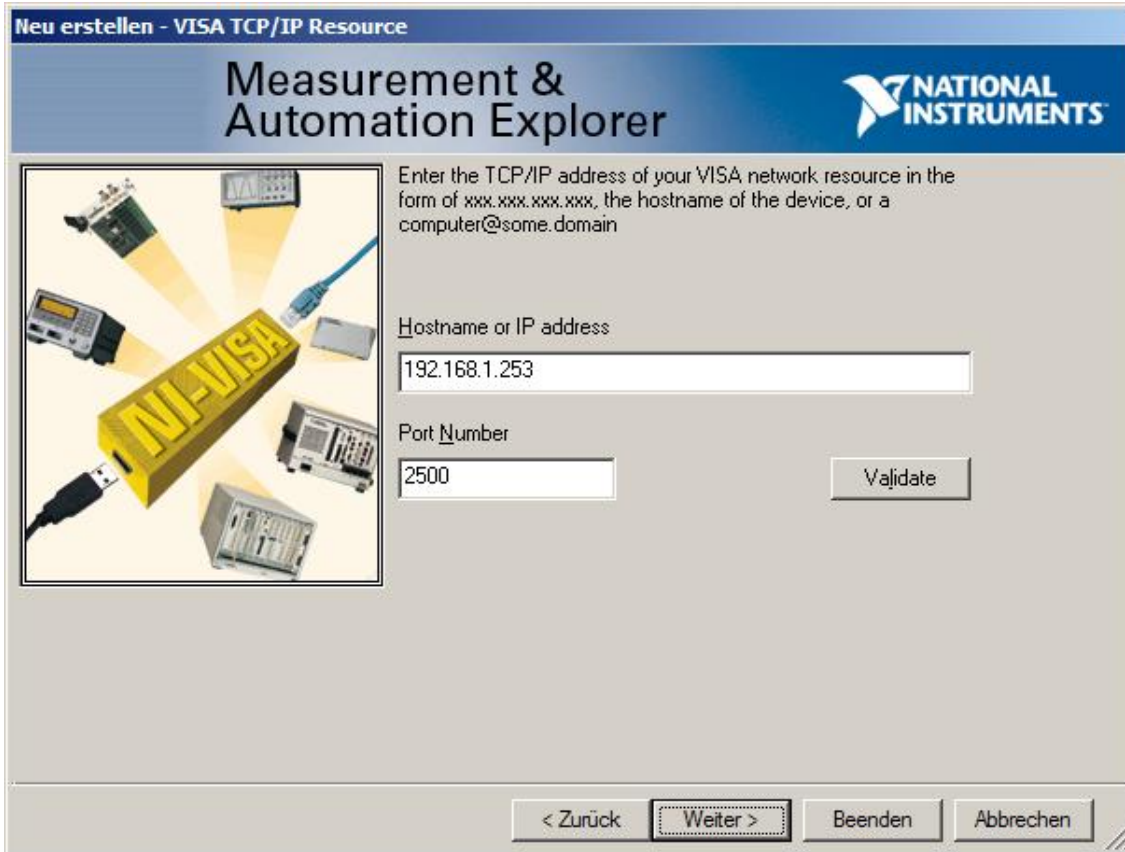
National Instruments Measurement & Automation Explorer

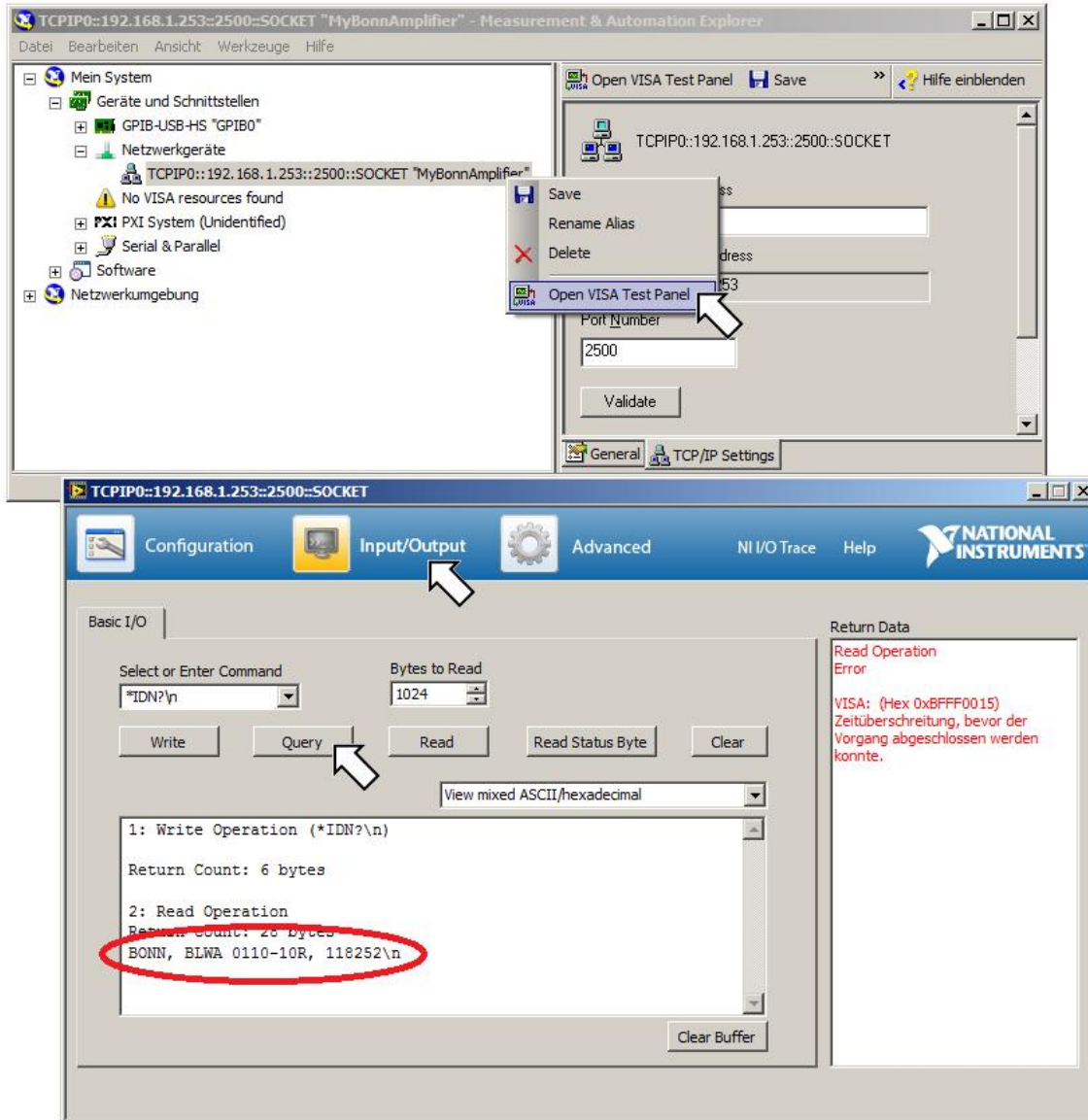
When scanning for an amplifier, the screenshots shown at next pages should be seen. Scanning/Finding instrument is not possible when using a LAN connection. Instead the wizard "create a new VISA TCP/IP Resource" can be used.

The amplifier's default IP address is 192.168.1.253, TCP Port 2500.

Please note: when testing connection to the instrument, you must not forget to explicitly append a newline character \n at the send string textbox (see red circle)

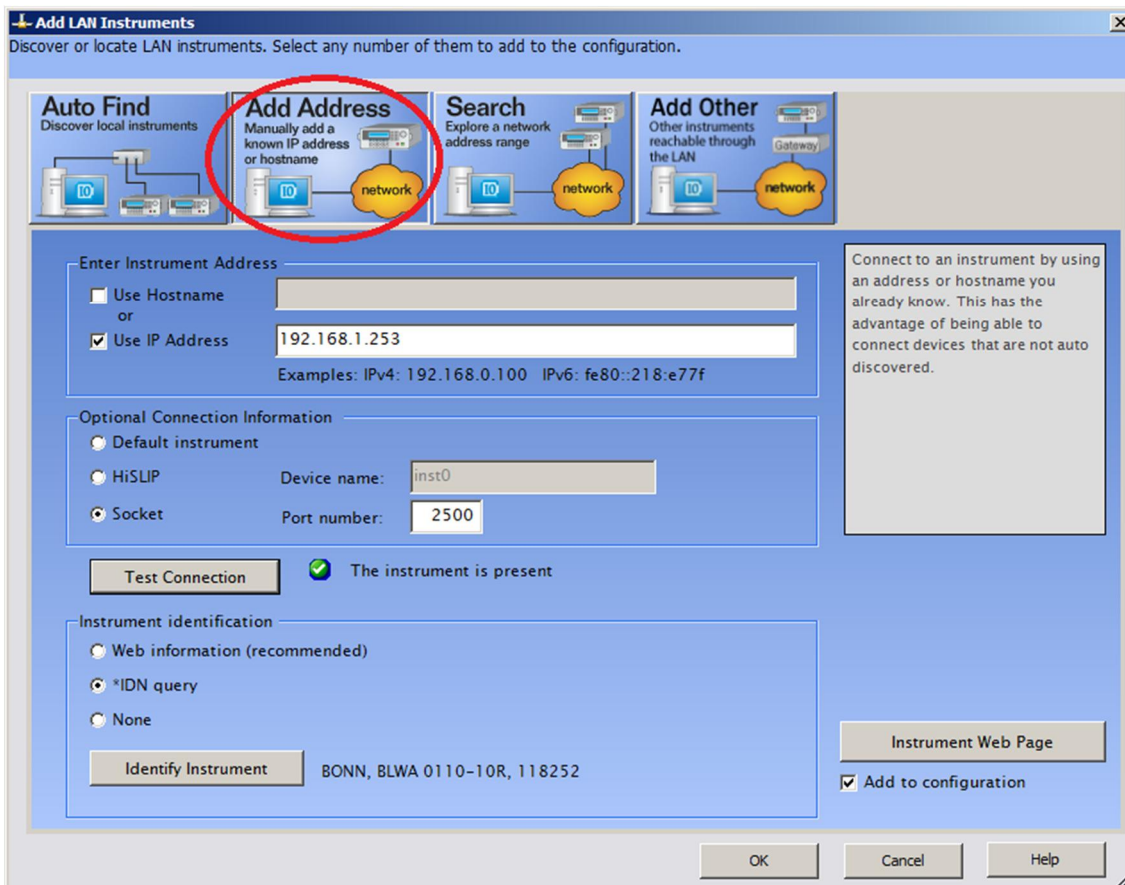






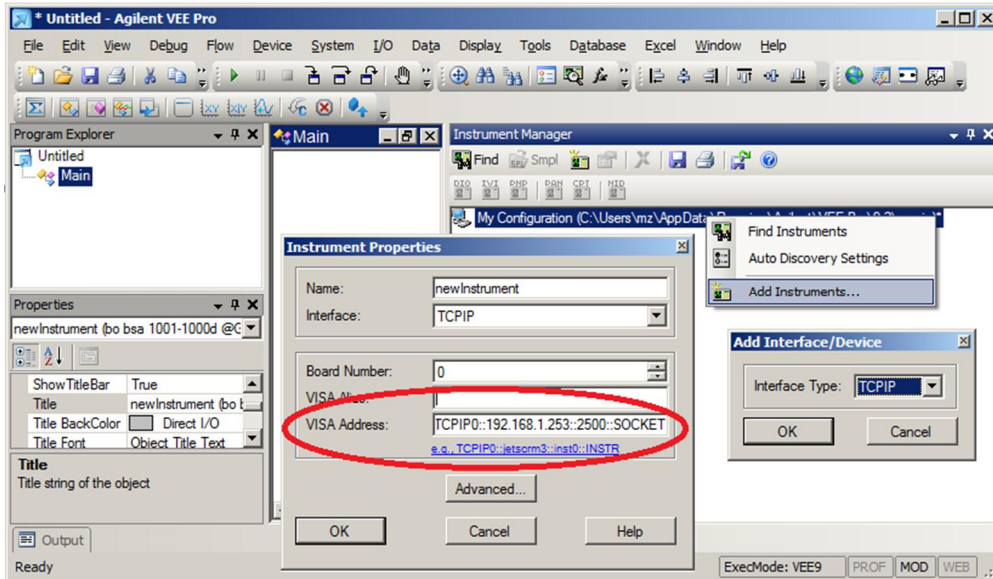
Agilent Connection Expert

When connecting an amplifier, please "add a LAN instrument" and configure its properties as follows:



The "Test Connection" and "Identify instrument" buttons should show the connected amplifier.

Agilent VEE



Rohde & Schwarz EMC32

